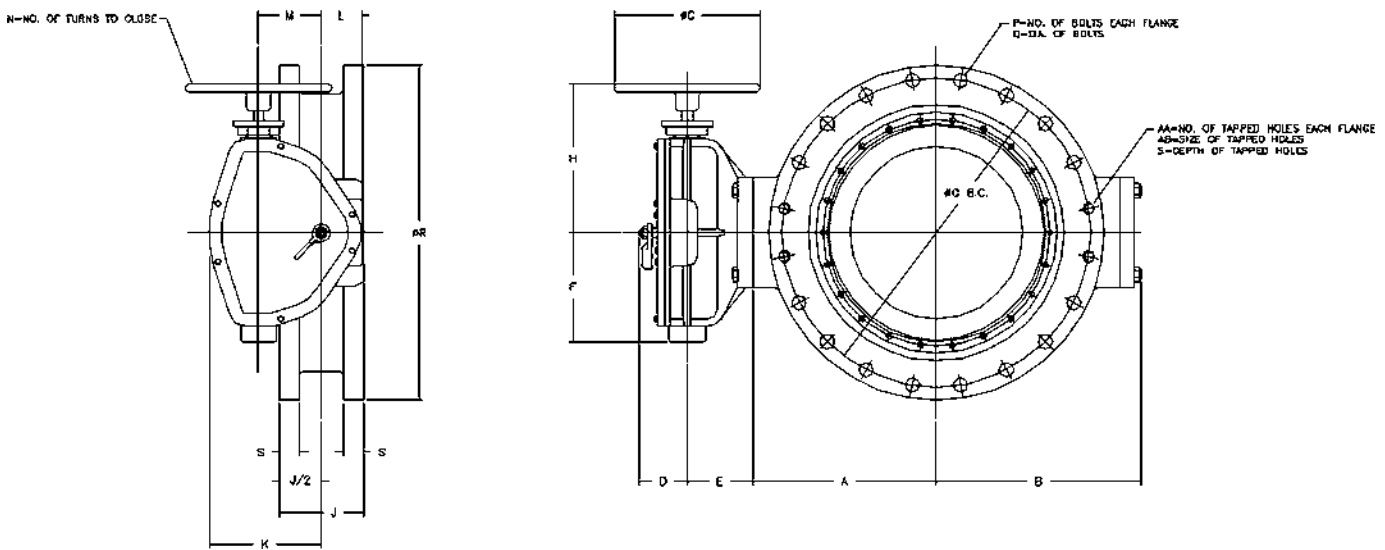


# ASSEMBLY 3"-24" BUTTERFLY VALVE STYLE 4500 FLANGED ENDS WITH HANDWHEEL OPERATOR

KENNEDY VALVE

**NOTE:**

1. FLOW MAY BE IN EITHER DIRECTION.
2. VALVE SHAFT WILL MEET OR EXCEED REQUIREMENTS OF SHAFT TABLE PER AWWA STANDARD C-504 FOR APPLICABLE CLASS.
3. REFERENCE AWWA C-504 FLANGES & DRILLING (ANSI 125)



VALVE SIZE	A	B	C	J	P	Q	R	S	AA	AB
3	4	5 7/16	6	5	4	5/8	9	15/16	4	5/8-11
4	4	5 7/16	7 1/2	5	8	5/8	9	15/16	4	5/8-11
6	5	6 1/2	9 1/2	5	6	3/4	11	1	4	3/4-10
8	6	7 9/16	11 3/4	6	8	3/4	13 1/2	1 1/8	4	3/4-10
10	7 3/4	9 5/8	14	8	12	7/8	16	1 3/16	-	-
12	9 1/2	11 3/8	16 1/4	8	12	7/8	19	1 1/4	-	-
14	10 7/16	12 15/16	18 3/4	8	12	1	21	1 3/8	4	1-8
16	12 3/16	14 11/16	21	8	16	1	23 1/2	1 7/16	4	1-8
18	13 8/16	15 13/16	23 1/4	8	16	1 1/8	25	1 9/16	4	1 1/8-7
20	14 7/8	17 3/8	25 1/2	8	20	1 1/8	27 1/2	1 11/16	4	1 1/8-7
24	17 19/32	20 1/8	30	8	20	1 1/4	32	1 7/8	4	1 1/4-7

VALVE SIZE	OPERATOR MODEL	D	E	F	G	H	K	L	M	N
3 & 4	65	2	3 9/16	3 7/16	3	7 3/4	3 7/16	2 1/4	1 3/8	16 1/2
6	150	2	3 9/16	3 7/16	3	7 3/4	3 7/16	2 1/4	1 3/8	16 1/2
8	250	2 1/6	3 11/16	4 1/16	3 7/8	8 3/4	4 1/2	2 3/8	2	24
10 & 12	510	2 1/4	4 1/2	6 7/16	6 3/16	10 1/16	5 1/8	2 3/4	3	36
14,16,18,20	1250	3 3/16	5 3/4	8 3/8	7	12 5/16	7 7/8	3 1/4	4	48
24	2200	3 3/16	6 1/4	10 3/8	9	14 5/16	10 3/4	3 7/8	8	72