

# Stainless Steel Check Valves

## Class 150 • Bolted Cover

Figure 377  
Raised Face, Flanged Ends

**Size Range:**

½ through 24 inches

**Design Features:**

- Retained Gasket
- Integral Seat
- MSS SP-42
- ASME B16.34

**Industry Standards**

End Flanges	ASME B16.5
Wall Section	ASME B16.34
Face-to-Face	ASME B16.10
Pressure-Temp. Ratings	ASME B16.34
Testing	API 598

**Materials of Construction**

1	Body	ASTM A351 CF8M
2	Cover	ASTM A351 CF8M
3	Disc	ASTM A351 CF8M
4	Hinge Arm	ASTM A351 CF8M
5	Hinge Pin	ASTM A276 T316
6	Disc Washer	ASTM A276 T304
7	Disc Nut	ASTM A194 GR 8M
8	Plug	ASTM A276 T316
9	Gasket	PTFE
10	Plug Seal	PTFE
11	Cover Bolt	ASTM A193 GR B8
12	Cover Bolt Nut	ASTM A194 GR 8
13	ID Tag	ASTM A276 T304

**Dimensions and Weights**

Valve Size	Weight (lbs)	Dimensions (inches)	
		A	B
½	4.2	4.25	2.4
¾	5.6	4.63	2.8
1	8.4	5.00	3.1
1 ½	13.5	6.50	4.1
2	20.4	8.00	4.6
2 ½	50.7	8.50	6.1
3	57.3	9.50	6.3
4	99.2	11.50	7.9
6	172.0	14.00	9.8
8	299.9	19.50	11.5
10	471.9	24.50	13.0
12	707.8	27.50	13.9
14	904.1	31.00	15.5
16	1133.4	34.00	16.5
18	1633.9	38.50	20.1
20	2070.5	38.50	21.7
24	2967.9	51.00	22.0

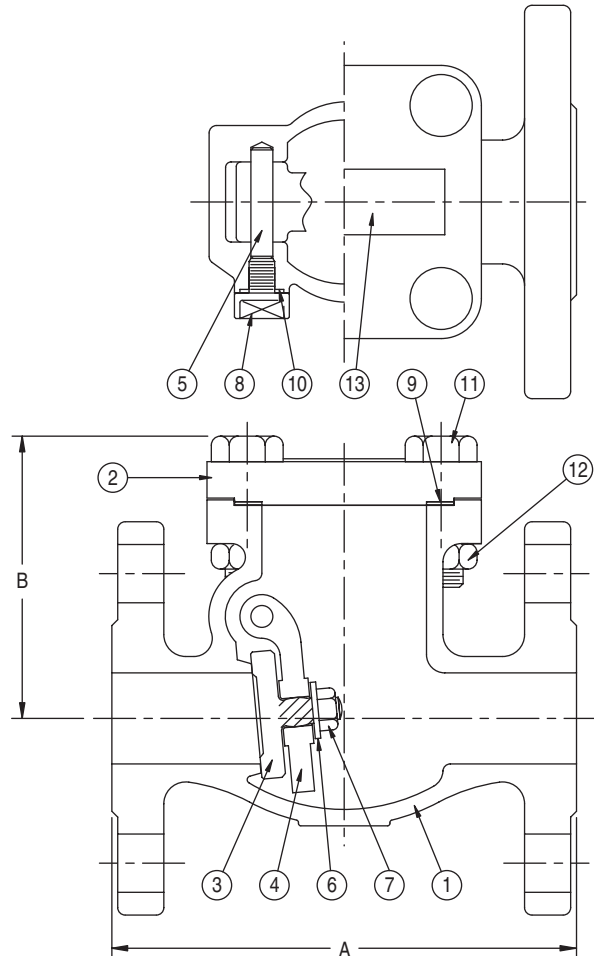


Fig. 377

